

Fiber Optic Fixtures

Fiberstars' fixtures are high quality both in terms of aesthetics and functionality. They are selected to ensure optimum integration with Fiberstars' illuminators and fiber. Fiberstars' fixtures provide a broad range of attractive trims, colors, and shapes to compliment any lighting job and can be applied where traditional fixtures can't.



focus: Creative Possibilities



Project: Retail Planners Associates Corporate Offices
Location: Columbus, Ohio
Designer: Retail Planners Associates

ACCENT FIXTURES

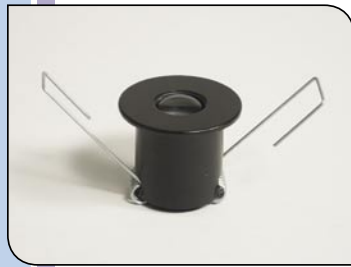
interior_fixed_lensed

ACCENT FIXTURES

interior_fixed_lensed



interior



FE-1111 FIBERESCENT FIXED AIM DOWNLIGHT	
Max. Overall Dimensions: 1.75" OD x 1.38" H (44.4MM OD x 35.1MM H)	
Trim/Flange Dimensions: 1.75" OD x 0.085" H (44.4MM OD x 2.16MM H)	
Aperture Dimensions: 0.72" OD (18.29MM OD)	
Rough-in: 1.375" (34.9MM)	Beam Spread: 15 (MIN.) – 35 (MAX.)
Recess: 3" (76.2MM)	Finish Options: WHITE, BLACK, GOLD
FSPT Fibers: 75 (MAX.)	SILVER
Ferrules: A10516	

Prime Material: OTHER METAL
Mounting: SPRING CLIPS INCLUDED

interior



FE-1701 FUTURA, FIXED AIM BEVEL TRIM	
Max. Overall Dimensions: 3.31" OD x 2.17" H (84MM OD x 55MM H)	
Trim/Flange Dimensions: 3.31" OD x .25" H (84MM OD x 6.4MM H)	
Aperture Dimensions: 2" OD (50.8MM OD)	
Rough-in: 2.7" (68.7MM)	Beam Spread: 15 (MIN.) – 25 (MAX.)
Recess: 5" (127MM)	Finish Options: WHITE, BLACK, GOLD,
FSPT Fibers: 75 (MAX.)	SILVER, BRUSHED
Ferrules: A10516	CHROME, ALUMINUM,
	ANTHRACITE, GRAPHITE

Technical Remarks:
Beveled, low-profile trim ring. Includes backplate, reflector and ferrule.
(A) FE-3112-CK LENSED MR-16 INSERT
(B) FE-1700 BACKPLATE

Mounting: SPRING CLIPS INCLUDED

interior



FE-1702 FUTURA, FIXED AIM RIVET TRIM	
Max. Overall Dimensions: 3.31" OD x 2.17" H (84MM OD x 55MM H)	
Trim/Flange Dimensions: 3.31" OD x .25" H (84MM OD x 6.4MM H)	
Aperture Dimensions: 2" OD (50.8MM OD)	
Rough-in: 2.7" (68.7MM)	Beam Spread: 15 (MIN.) – 25 (MAX.)
Recess: 5" (127MM)	Finish Options: WHITE, BLACK, GOLD,
FSPT Fibers: 75 (MAX.)	SILVER, BRUSHED
Ferrules: A10516	CHROME, ALUMINUM,
	ANTHRACITE, GRAPHITE

Technical Remarks:
Rivet detail, low-profile trim ring. Includes backplate, reflector and ferrule.
(A) FE-3112-CK LENSED MR-16 INSERT
(B) FE-1700 BACKPLATE

Prime Material: OTHER METAL
Mounting: SPRING CLIPS INCLUDED

interior



FE-3112-CK LENSED MR-16 INSERT	
Max. Overall Dimensions: 1.985" OD x 1.85" H (50.4MM OD x 46.99MM H)	
Trim/Flange Dimensions: 1.985" OD x 0.055" H (50.4MM OD x 1.4MM H)	
Aperture Dimensions: 0.81" OD (20.6MM OD)	
Rough-in: 1.88" (47.75MM)	Beam Spread: 15 (MIN.) – 25 (MAX.)
Recess: 4" (102MM)	Finish Options: CHROME
FSPT Fibers: 75 (MAX.)	
Ferrules: A10516	

Technical Remarks:
Reflector and glass lens intended to replace the lamp in a standard MR-16 fixture. Allow up to 2" behind insert for fiber optic cable.

Prime Material: ALUMINUM

interior



CRE2501 FIXED LENS DOWNLIGHT	
Max. Overall Dimensions: 2" OD x 2" H (50.8MM OD x 40MM H)	
Trim/Flange Dimensions: 2" OD x 0.095" H (50.8MM OD x 2.4MM H)	
Aperture Dimensions: 1.05" OD (26.7MM OD)	
Rough-in: 1.575" (40MM)	Beam Spread: 15 (MIN.) – 25 (MAX.)
Recess: 1.378" (35MM)	Finish Options: WHITE, BLACK, SILVER
FSPT Fibers: 75 (MAX.)	GOLD
Ferrules: 8MM, 10MM	

Prime Material: OTHER METAL
Mounting: SPRING CLIPS INCLUDED

interior



CRE2502 CLEAR OR FROSTED DOWNLIGHT	
Max. Overall Dimensions: 2" OD x 2" H (50.8MM OD x 50.8MM H)	
Trim/Flange Dimensions: 2" OD x 0.095" H (50.8MM OD x 2.4MM H)	
Aperture Dimensions: 1.05" OD (26.7MM OD)	
Rough-in: 1.575" (40MM)	Beam Spread: 48 (MIN.) – 48 (MAX.)
Recess: 1.378" (35MM)	Finish Options: WHITE, BLACK, SILVER,
FSPT Fibers: 75 (MAX.)	GOLD
Ferrules: 8MM, 10MM	

Prime Material: OTHER METAL
Mounting: SPRING CLIPS INCLUDED

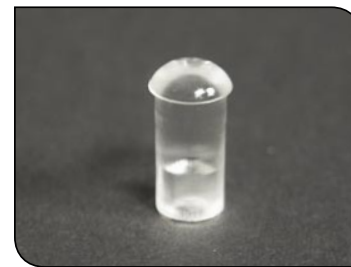
interior



LBM06100721, LBM06100722 LENS ACCENT	
Max. Overall Dimensions: 1.399" OD x 1.457" H (34MM OD x 37MM H)	
Trim/Flange Dimensions: 1.399" OD x 0.079" H (34MM OD x 2MM H)	
Aperture Dimensions: 0.75" OD (19MM OD)	
Rough-in: 1" (25.4MM)	Beam Spread: 15 (MIN.) – 35 (MAX.)
Recess: 1.81" (30MM)	Finish Options: BRASS - 721
FSPT Fibers: 62 (MAX.)	SILVER - 722
Ferrules: 8MM	

Prime Material: ALUMINUM
Mounting: SPRING CLIPS INCLUDED

interior



LBM061108301 4-DEGREE LENS	
Max. Overall Dimensions: 0.276" OD x 0.551" H (7MM OD x 14MM H)	
Trim/Flange Dimensions: 0.276" OD x 0.098" H (7MM OD x 2.5MM H)	
Aperture Dimensions: 0.276" OD (7MM OD)	
Rough-in: 0.256" (6.6MM)	Beam Spread: 4 (MIN.) – 4 (MAX.)
Recess: 0.453" (11.5MM)	Finish Options: CLEAR
FSPT Fibers: 1 (MAX.)	
Ferrules: INCLUDED	

Prime Material: PLASTIC
Mounting: ADHESIVE

interior



LBM061108304 20-DEGREE LENS	
Max. Overall Dimensions: 0.433" x 0.709" (11MM OD x 18MM H)	
Trim/Flange Dimensions: 0.433" x 0.315" (11MM OD x 8MM H)	
Aperture Dimensions: 0.433" OD (11MM OD)	
Rough-in: 0.315" (8MM)	Beam Spread: 20 (MIN.) – 20 (MAX.)
Recess: 0.394" (10MM)	Finish Options: CLEAR
FSPT Fibers: 1 (MAX.)	
Ferrules: INCLUDED	

Prime Material: PLASTIC
Mounting: ADHESIVE

interior



LBM061209118, LBM061209119 STEP OR WALL LIGHT	
Max. Overall Dimensions: 2.441" OD x 1.181" H (62MM OD x 30MM H)	
Trim/Flange Dimensions: 2.441" OD x 0.079" H (62MM OD x 2MM H)	
Aperture Dimensions: 1.496" OD (38MM OD)	
Rough-in: 1.654" (42MM)	Beam Spread: 60 (MIN.) – 60 (MAX.)
Recess: 1.102" (28MM)	Finish Options: BLACK - 118
FSPT Fibers: 75 (MAX.)	SILVER - 119
Ferrules: 8MM, 10MM	

Technical Remarks:
Frosted glass cover.

Prime Material: ALUMINUM
Mounting: SCREWS IN FLANGE

ACCENT FIXTURES

interior_fixed_unlensed

interior



HPDL-40 HIGH CUT-OFF SPOTLIGHT, 40-DEGREE	
Max. Overall Dimensions:	3.14" OD x 3" H (79.8MM OD x 76.2MM H)
Trim/Flange Dimensions:	3.14" OD x 0.077" H (79.8MM OD x 1.95MM H)
Aperture Dimensions:	2.02" OD (51.3MM OD)
Rough-in:	2.25" (57.2MM)
Recess:	3" (76.2MM)
FSPT Fibers:	75 (MAX.)
Ferrules:	INCLUDED
Beam Spread:	40 (MIN.) – 40 (MAX.)
Finish Options:	CHROME

Technical Remarks:
Specular reflector fixture provides high cut-off spotlight at a low-price.

Prime Material: PLASTIC
Mounting: METAL SPRING CLIPS INCLUDED

interior



HPDL-24 HIGH CUT-OFF SPOTLIGHT, 24-DEGREE	
Max. Overall Dimensions:	2.43" OD x 3" H (61.7MM OD x 76.2MM H)
Trim/Flange Dimensions:	2.43" OD x 0.083" H (61.7MM OD x 2.1MM H)
Aperture Dimensions:	1.3" OD (33MM OD)
Rough-in:	1.5" (38.1MM)
Recess:	3" (76.2MM)
FSPT Fibers:	75 (MAX.)
Ferrules:	INCLUDED
Beam Spread:	24 (MIN.) – 24 (MAX.)
Finish Options:	CHROME

Technical Remarks:
Specular reflector fixture provides high cut-off spotlight at a low-price.

Prime Material: PLASTIC
Mounting: METAL SPRING CLIPS INCLUDED

interior



HPDL-15 HIGH CUT-OFF SPOTLIGHT, 15-DEGREE	
Max. Overall Dimensions:	2.43" OD x 3" H (61.7MM OD x 76.2MM H)
Trim/Flange Dimensions:	2.43" OD x 0.075" H (61.7MM OD x 1.9MM H)
Aperture Dimensions:	0.94" OD (23.9MM OD)
Rough-in:	1" (25.4MM)
Recess:	76.2" (3MM)
FSPT Fibers:	75 (MAX.)
Ferrules:	INCLUDED
Beam Spread:	15 (MIN.) – 15 (MAX.)
Finish Options:	CHROME

Technical Remarks:
Specular reflector fixture provides high cut-off spotlight at a low-price.

Prime Material: PLASTIC
Mounting: METAL SPRING CLIPS INCLUDED

interior



CRE1119 90-DEGREE MIRROR	
Max. Overall Dimensions:	0.75" OD x 1.375" H (19MM OD x 34.9MM H)
Trim/Flange Dimensions:	0.75" OD x 1.375" H (19MM OD x 34.9MM H)
Aperture Dimensions:	0.75" OD (19MM OD)
Rough-in:	1" (25.4MM)
Recess:	0.8125" (20.6MM)
FSPT Fibers:	50 (MAX.)
Ferrules:	8MM
Beam Spread:	60 (MIN.) – 60 (MAX.)
Finish Options:	SILVER, BLACK

Technical Remarks:
Aperture and rough-in are rectangular (approximately 0.82" x 1.0"). Fiber enters from the side and reflects off of a mirror.

Prime Material: STEEL
Mounting: SCREWS

ACCENT FIXTURES

interior_adjustable_lensed



interior



FE-2211 FIBERSCENT, ADJUSTABLE AIM	
Max. Overall Dimensions:	2" OD x 1.38" H (50.8MM OD x 35.1MM H)
Trim/Flange Dimensions:	2" OD x 0.83" H (50.8MM OD x 2.11MM H)
Aperture Dimensions:	0.753" OD (19.13MM OD)
Rough-in:	1.625" (41.3MM)
Recess:	3" (76.2MM)
FSPT Fibers:	75 (MAX.)
Ferrules:	A10516
Beam Spread:	15 (MIN.) – 25 (MAX.)
Max. Tilt Angle:	+/- 20
Finish Options:	WHITE, BLACK, GOLD, CHROME

Prime Material: ALUMINUM
Mounting: METAL SPRING CLIPS INCLUDED

interior



FE-1604 FUTURA, ADJUSTABLE AIM, BEVELED TRIM	
Max. Overall Dimensions:	3.75" OD x 7" H (95.2MM OD x 178MM H)
Trim/Flange Dimensions:	3.75" OD x 0.091" H (95.2MM OD x 2.31MM H)
Aperture Dimensions:	1.74" OD (44.2MM OD)
Rough-in:	3.5" (88.9MM)
Recess:	5" (127MM)
FSPT Fibers:	75 (MAX.)
Ferrules:	A10516
Beam Spread:	15 (MIN.) – 25 (MAX.)
Rotation Angle:	360
Max. Tilt Angle:	+/- 30
Finish Options:	WHITE, BLACK, GOLD, SILVER, BRUSHED CHROME, ALUMINUM, ANTHRACITE, GRAPHITE

Prime Material: OTHER METAL
Mounting: METAL SPRING CLIPS INCLUDED

interior



CRE1001 LENSED FULLY ADJUSTABLE	
Max. Overall Dimensions:	2" OD x 2.441" H (50.8MM OD x 62MM H)
Trim/Flange Dimensions:	2" OD x 1.614" H (50.8MM OD x 41MM H)
Aperture Dimensions:	1.181" OD (30MM OD)
Rough-in:	1.575" (40MM)
Recess:	0.826" (21MM)
FSPT Fibers:	50 (MAX.)
Ferrules:	8MM
Beam Spread:	15 (MIN.) – 25 (MAX.)
Rotation Angle:	360
Max. Tilt Angle:	+/- 40
Finish Options:	WHITE, BLACK, GOLD, CHROME

Prime Material: OTHER METAL
Mounting: METAL SPRING CLIPS INCLUDED

interior



CRE2225 MINIATURE LENSED SPOTLIGHT	
Max. Overall Dimensions:	1.654" OD x 1.654" H (42MM OD x 42" H)
Trim/Flange Dimensions:	1.181" OD (30MM OD)
Aperture Dimensions:	0.866" OD (22MM OD)
FSPT Fibers:	75 (MAX.)
Ferrules:	10MM THREADED
Beam Spread:	17 (MIN.) – 17 (MAX.)
Rotation Angle:	360
Max. Tilt Angle:	+/- 30°
Finish Options:	SILVER, BLACK

Prime Material: STEEL
Mounting: MOUNTING SCREWS

interior



CRE2231 MINIATURE ADJUSTABLE LENSED DOWNLIGHT	
Max. Overall Dimensions:	1.25" OD x 1" H (31.8MM OD x 40MM H)
Trim/Flange Dimensions:	1.25" OD x 0.045" H (31.8MM OD x 1.14MM H)
Aperture Dimensions:	0.6" OD (20MM OD)
Rough-in:	1" (25.4MM)
Recess:	1.375" (34.9MM)
FSPT Fibers:	75 (MAX.)
Ferrules:	10MM THREADED
Beam Spread:	28 (MIN.) – 32 (MAX.)
Max. Tilt Angle:	+/- 30
Finish Options:	WHITE, BLACK, CHROME, BRASS

Prime Material: OTHER METAL
Mounting: METAL SPRING CLIPS INCLUDED

ACCENT FIXTURES

interior_adjustable_lensed

ACCENT FIXTURES

interior_adjustable_unlensed



interior



CRE2224 MINIATURE SPOTLIGHT	
Max. Overall Dimensions: 1.875" OD x 1.5" H (30.2MM OD x 38.1MM H)	
Aperture Dimensions: 0.625" OD (15.9MM OD)	
FSPT Fibers: 75 (MAX.)	Beam Spread: 48 (MIN.) – 48 (MAX.)
Ferrules: 8MM, 10MM	Rotation Angle: 360
	Max. Tilt Angle: 30°
	Finish Options: SILVER, BLACK

Prime Material: ALUMINUM
Mounting: MOUNTING SCREWS TO SURFACE

interior



LBM06100621, LBM06100622 LENSED FIXTURE	
Max. Overall Dimensions: 1.399" OD x 2.362" H (34MM OD x 60MM H)	
Trim/Flange Dimensions: 1.339" OD x 0.079" H (34MM OD x 2MM H)	
Aperture Dimensions: 0.75" OD (19MM OD)	
Rough-in: 1.181" (30MM)	Beam Spread: 15 (MIN.) – 35 (MAX.)
Recess: 1.181" (30MM)	Rotation Angle: 360
FSPT Fibers: 62 (MAX.)	Max. Tilt Angle: +/- 40
Ferrules: 8MM	Finish Options: BRASS - 621 SILVER - 622

Prime Material: ALUMINUM
Mounting: SPRING CLIPS INCLUDED

interior



LBM06100822 EXTENDED LENSED FIXTURE	
Max. Overall Dimensions: 1" OD x 1.75" H (25.4MM OD x 44.4MM H)	
Aperture Dimensions: 0.75" OD (19MM OD)	
FSPT Fibers: 62 (MAX.)	Beam Spread: 15 (MIN.) – 35 (MAX.)
Ferrules: 8MM, 10MM	Rotation Angle: 360
	Max. Tilt Angle: +/- 90
	Finish Options: STAINLESS STEEL

Prime Material: STAINLESS STEEL
Mounting: YOKE

interior



LBMFLEX-LG(L)/LBMFLEX-SM FLEXIBLE TUBE	
Max. Overall Dimensions (SM):	0.43" OD (10.92MM OD) 0.15" ID (3.81MM ID) 0.35" RECESS (8.89MM RECESS)
Max. Overall Dimensions (LG(L)):	0.72" OD (18.29MM OD) 0.35" ID (8.89MM ID) 0.5" RECESS (12.7MM RECESS)
Aperture Dimensions (LGL only):	0.78" OD (19.81MM OD)
FSPT Fibers (SM): 25 (MAX.)	Beam Spread: 48 (MIN.) – 60 (MAX.)
FSPT Fibers (LG(L)): 75 (MAX.)	Rotation Angle: 360
	Max. Tilt Angle: +/- 180
	Finish Options: WHITE, BLACK, GOLD SILVER, CHROME, BRASS

Technical Remarks:
Fixture available in lengths from 4" to 36" (100mm to 1000mm). A lensed version of this fixture is also available (LBMFLEX-LGL).

Prime Material: OTHER METAL
Mounting: MOUNTING NUT

interior



LBM061001251 CASELIGHT 1	
Max. Overall Dimensions: 1.723" OD x 1.949" H (44MM OD x 49.5MM H)	
Trim/Flange Dimensions: 1.723" OD x 0.079" H (44MM OD x 2MM H)	
Aperture Dimensions: 0.748" OD (19MM OD)	
Rough-in: 1.457" (37MM)	Beam Spread: 24 (MIN.) – 48 (MAX.)
Recess: 0.689" (17.5MM)	Rotation Angle: 360
FSPT Fibers: 62 (MAX.)	Max. Tilt Angle: +/- 32
Ferrules: 8MM	Finish Options: BLACK

Prime Material: ALUMINUM
Mounting: MOUNTING NUT INCLUDED

interior



LBM061001252 CASELIGHT 2	
Max. Overall Dimensions: 1.732" OD x 1.28" H (44MM OD x 32.5MM H)	
Trim/Flange Dimensions: 1.732" OD x 0.079" H (44MM OD x 2MM H)	
Aperture Dimensions: 0.472" OD (12MM OD)	
Rough-in: 1.457" (37MM)	Beam Spread: 48 (MIN.) – 60 (MAX.)
Recess: 0.689" (17.5MM)	Rotation Angle: 360
FSPT Fibers: 62 (MAX.)	Max. Tilt Angle: +/- 32
Ferrules: 8MM	Finish Options: BLACK

Prime Material: ALUMINUM
Mounting: MOUNTING NUT INCLUDED

interior



LBM061001253 CASELIGHT 3	
Max. Overall Dimensions: 1.732" OD x 0.984" H (44MM OD x 25MM H)	
Trim/Flange Dimensions: 1.732" OD x 0.079" H (44MM OD x 2MM H)	
Aperture Dimensions: 0.315" OD (8MM OD)	
Rough-in: 1.457" (37MM)	Beam Spread: 48 (MIN.) – 60 (MAX.)
Recess: 0.689" (17.5MM)	Rotation Angle: 360
FSPT Fibers: 62 (MAX.)	Max. Tilt Angle: +/- 32
Ferrules: 8MM	Finish Options: BLACK

Prime Material: ALUMINUM
Mounting: MOUNTING NUT INCLUDED

interior



LBM06100524 CASELIGHT 4	
Max. Overall Dimensions: 0.984" OD x 1" H (25MM OD x 25.4MM H)	
Trim/Flange Dimensions: 0.984" OD x 0.059" H (25MM OD x 1.5MM H)	
Aperture Dimensions: 0.571" OD (14.5MM OD)	
Rough-in: 0.787" (20MM)	Beam Spread: 40 (MIN.) – 40 (MAX.)
Recess: 0.945" (24MM)	Finish Options: BLACK
FSPT Fibers: 62 (MAX.)	
Ferrules: 8MM	

Prime Material: ALUMINUM
Mounting: MOUNTING NUT INCLUDED

interior



LBM06100624 CASELIGHT 5	
Max. Overall Dimensions: 1.89" OD x 2.087" H (48MM OD x 53MM H)	
Trim/Flange Dimensions: 1.89" OD x 0.079" H (48MM OD x 2MM H)	
Aperture Dimensions: 0.748" OD (19MM OD)	
Rough-in: 1.693" (43MM)	Beam Spread: 24 (MIN.) – 48 (MAX.)
Recess: 1.358" (34.5MM)	Rotation Angle: 360
FSPT Fibers: 62 (MAX.)	Max. Tilt Angle: +/- 32
Ferrules: 8MM	Finish Options: BLACK

Prime Material: ALUMINUM
Mounting: MOUNTING NUT INCLUDED

ACCENT FIXTURES

interior_adjustable_unlensed

interior



LBM06100222 LENSLESS AIMABLE FIXTURE	
Max. Overall Dimensions: 1.575" OD x 1.181" H (40MM OD x 30MM H)	
Trim/Flange Dimensions: 1.575" OD x 0.79" H (40MM OD x 20.1MM H)	
Aperture Dimensions: 0.315" OD (8MM OD)	
Rough-in: 1.181" (30MM)	Beam Spread: 48 (MIN.) – 48 (MAX.)
Recess: 1.181" (30MM)	Rotation Angle: 360
FSPT Fibers: 62 (MAX.)	Max. Tilt Angle: +/- 25
Ferrules: 8MM	Finish Options: SILVER

Prime Material: ALUMINUM
Mounting: SPRING CLIPS

ACCENT FIXTURES

exterior_adjustable



exterior



FS210 FIBERTWIST	
Max. Overall Dimensions: 0.8" OD x 12" H (20.3MM OD x 305MM H)*	
Aperture Dimensions: 0.524" OD (13.77MM OD)	
FSPT Fibers: 75 (MAX.)	Beam Spread: 60 (MIN.) – 60 (MAX.)
Ferrules: INCLUDED	Rotation Angle: 360
	Max. Tilt Angle: +/- 270
	Finish Options: BLACK

*FS-912 - 6" extension for FS-210. Segments may be removed if less than 6" is desired.

Technical Remarks:
Mount to standard NPT box or with optional FS-910 Ground Stake. Segments are removable if shorter length is desired. Fixture is unlensed.

Prime Material: PLASTIC
Mounting: 1/2" NPT

exterior



FS-910 GROUND MOUNTING STAKE	
Max. Overall Dimensions: 2.05" OD x 6" H (52.07MM OD x 152.4MM H)	
	Finish Options: BLACK

Technical Remarks:
Threaded ground mounting stake for use with FS-210 and FS-310. Screw stake onto bottom of fixture, then depress stake into soil.

Prime Material: PLASTIC
Mounting: 1/2" NPT

exterior



CRE2223 STEM MOUNTED SPOTLIGHT	
Max. Overall Dimensions: 4" OD x 3" H (102MM OD x 76.2MM H)	
Trim/Flange Dimensions: 1.772" OD (45MM OD)	
Aperture Dimensions: 1.062" OD (27MM OD)	
FSPT Fibers: 75 (MAX.)	Beam Spread: 15 (MIN.) – 15 (MAX.)
Ferrules: 8MM, 10MM	Rotation Angle: 360
	Max. Tilt Angle: +/- 30
	Finish Options: STAINLESS STEEL

Technical Remarks:
Fixture is lensed.

Prime Material: STAINLESS STEEL
Mounting: SCREWS

exterior



CRE2610 BURIED ADJUSTABLE SPOTLIGHT	
Max. Overall Dimensions: 3.78" OD x 4" H (96MM OD x 102MM H)	
Trim/Flange Dimensions: 3.78" OD x 0.413" H (96MM OD x 10.5MM H)	
Aperture Dimensions: 1.654" OD (42MM OD)	
Rough-in: 3.543" (90MM)	Beam Spread: 17 (MIN.) – 17 (MAX.)
Recess: 6.5" (165MM)	Rotation Angle: 360
FSPT Fibers: 75 (MAX.)	Max. Tilt Angle: +/- 15
Ferrules: 8MM, 10MM	Finish Options: STAINLESS STEEL

Technical Remarks:
Spotlight is adjustable for both tilt and rotation from above the ground WITHOUT uninstalling fixture. Fixture is lensed.

Prime Material: STAINLESS STEEL
Mounting: IN GROUND

exterior



LBM06120420 ROUND, RECESSED ADJUSTABLE ACCENT	
Max. Overall Dimensions: 2.559" OD x 1.654" H (65MM OD x 42MM H)	
Trim/Flange Dimensions: 2.559" OD x 0.354" H (65MM OD x 9MM H)	
Aperture Dimensions: 0.75" OD (19MM OD)	
Rough-in: 1.575" (40MM)	Beam Spread: 15 (MIN.) – 35 (MAX.)
Recess: 3" (76.2MM)	Rotation Angle: 360
FSPT Fibers: 75 (MAX.)	Max. Tilt Angle: +/- 30
Ferrules: 8MM, 10MM	Finish Options: STAINLESS STEEL

Technical Remarks:
Adhere inside PVC pipe or directly into wall or floor with Fiberstars silicon adhesive (FS-136 or FS-138). Fixture is lensed.

Prime Material: STAINLESS STEEL
Mounting: IN GROUND

DECORATIVE FIXTURES

interior_fixed_unlensed

interior

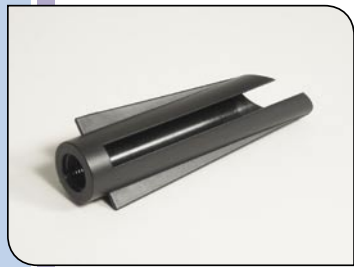


FS-310 FIBERSTIK	
FS-310-5 Dimensions:	1.5" OD x 5" H (38.1MM OD x 127MM H)
FS-310-9 Dimensions:	1.5" OD x 9" H (38.1MM OD x 229MM H)
FS-310-12 Dimensions:	1.5" OD x 12" H (38.1MM OD x 305MM H)
FSPT Fibers:	25 (MAX.)
Finish Options:	CLEAR

Technical Remarks:
Partially knurled acrylic cylinder on anodized aluminum threaded base. Available in three lengths: 5" (FS-310-5), 9" (FS-310-9), and 12" (FS-310-12). Mount to standard NPT box or with optional FS-910 Ground Stake. Secure fiber to base with epoxy (FS-115).

Prime Material: ACRYLIC
Mounting: 1/2" NPT

interior



FS-910 GROUND MOUNTING STAKE	
Max. Overall Dimensions:	2.05" OD x 6" H (52.07MM OD x 152.4MM H)
Finish Options:	BLACK

Technical Remarks:
Threaded ground mounting stake for use with FS-210 and FS-310. Screw stake onto bottom of fixture, then depress stake into soil.

Prime Material: PLASTIC
Mounting: 1/2" NPT

interior



FIBERGLOBE HOLLOW PLASTIC "G" LAMP	
Max. Overall Dimensions:	2.35" OD ROUND (59.7MM OD ROUND)
Rough-in:	0.96" (24.38MM)
Recess:	4" (102MM)
FSPT Fibers:	25 (MAX.)
Beam Spread:	60 (MIN.) – 60 (MAX.)
Finish Options:	CLEAR, FROSTED

Technical Remarks:
Shatter resistant polycarbonate globe intended for use as an unbreakable and remotely-relamped alternative to standard G lamps. Fixture includes globe and gasketed mounting collar.

Prime Material: PLASTIC
Mounting: GASKETED MOUNTING COLLAR

interior



CRE2503 SPARKLE POINT	
Max. Overall Dimensions:	2" OD x 3" H (50.8MM OD x 65MM H)
Trim/Flange Dimensions:	2" OD x 0.094" H (50.8MM OD x 2.39MM H)
Aperture Dimensions:	0.43" OD (10MM OD)
Rough-in:	1.575" (40MM)
Recess:	1.378" (35MM)
FSPT Fibers:	50 (MAX.)
Ferrules:	8MM
Finish Options:	WHITE, BLACK, GOLD, SILVER

Prime Material: OTHER METAL, ACRYLIC
Mounting: SPRING CLIPS INCLUDED

interior



CRE2504 DROP ACRYLIC ROD	
Max. Overall Dimensions:	2" OD x 3" H (50.8MM OD x 65MM H)
Trim/Flange Dimensions:	2" OD x 0.094" H (50.8MM OD x 2.39MM H)
Aperture Dimensions:	0.98" OD (20MM OD)
Rough-in:	1.575" (40MM)
Recess:	1.378" (35MM)
FSPT Fibers:	75 (MAX.)
Ferrules:	8MM, 10MM
Finish Options:	WHITE, BLACK, GOLD, SILVER

Prime Material: OTHER METAL, ACRYLIC
Mounting: SPRING CLIPS INCLUDED

DECORATIVE FIXTURES

interior_fixed_unlensed



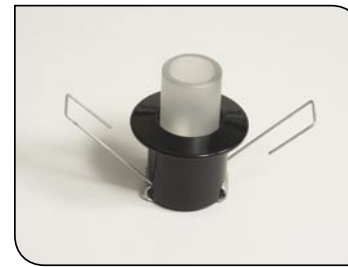
interior



CRE2505 DROP ACRYLIC CONE	
Max. Overall Dimensions:	2" OD x 3" H (50.8MM OD x 65MM H)
Trim/Flange Dimensions:	2" OD x 0.094" H (50.8MM OD x 2.39MM H)
Aperture Dimensions:	0.98" OD (24.89MM OD)
Rough-in:	1.575" (40MM)
Recess:	1.378" (35MM)
FSPT Fibers:	75 (MAX.)
Ferrules:	8MM, 10MM
Finish Options:	WHITE, BLACK, GOLD, SILVER

Prime Material: OTHER METAL, ACRYLIC
Mounting: SPRING CLIPS INCLUDED

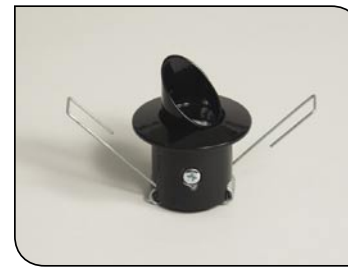
interior



CRE2506 DROP ACRYLIC TUBE	
Max. Overall Dimensions:	2" OD x 3" H (50.8MM OD x 65MM H)
Trim/Flange Dimensions:	2" OD x 0.094" H (50.8MM OD x 2.39MM H)
Aperture Dimensions:	0.98" OD (24.89MM OD)
Rough-in:	1.575" (40MM)
Recess:	1.378" (35MM)
FSPT Fibers:	75 (MAX.)
Ferrules:	8MM, 10MM
Finish Options:	WHITE, BLACK, GOLD, SILVER

Prime Material: OTHER METAL, ACRYLIC
Mounting: SPRING CLIPS INCLUDED

interior



CRE2507 WALL WASHER	
Max. Overall Dimensions:	2" OD x 2.34" H (50.8MM OD x 59.84MM H)
Trim/Flange Dimensions:	2" OD x 0.094" H (50.8MM OD x 2.39MM H)
Aperture Dimensions:	0.876" OD (22.25MM OD)
Rough-in:	1.575" (40MM)
Recess:	1.378" (35MM)
FSPT Fibers:	75 (MAX.)
Ferrules:	8MM, 10MM
Finish Options:	WHITE, BLACK, GOLD, SILVER

Prime Material: OTHER METAL, ACRYLIC
Mounting: SPRING CLIPS INCLUDED

DECORATIVE POINTS AND CRYSTALS

interior_fixed_unlensed

interior



FE-9001 FINE POINT	
Max. Overall Dimensions: 0.63" OD x 0.881" H (16MM OD x 22.4MM H)	
Trim/Flange Dimensions: 0.63" OD x 0.093" H (16MM OD x 2.4MM H)	
Aperture Dimensions: 0.04" OD (1MM OD)	
Rough-in: 0.394" (10MM)	Finish Options: GOLD, SILVER
Recess: 0.788" (20MM)	
FSPT Fibers: 1 (MAX.)	

Prime Material: PLASTIC
Mounting: SLEEVE INCLUDED

interior



FE-9002 BALL LENS POINT	
Max. Overall Dimensions: 0.63" OD x 0.936" H (16MM OD x 23.8MM H)	
Trim/Flange Dimensions: 0.63" OD x 0.148" H (16MM OD x 3.8MM H)	
Aperture Dimensions: 0.177" OD (4.5MM OD)	
Rough-in: 0.394" (10MM)	Finish Options: GOLD, SILVER
Recess: 0.788" (20MM)	
FSPT Fibers: 3 (MAX.)	

Prime Material: PLASTIC
Mounting: SLEEVE INCLUDED

interior



FE-9003 CRYSTAL POINT	
Max. Overall Dimensions: 0.63" OD x 1.3" H (16MM OD x 33MM H)	
Trim/Flange Dimensions: 0.63" OD x 0.512" H (16MM OD x 13MM H)	
Aperture Dimensions: 0.306" OD (7.8MM OD)	
Rough-in: 0.394" (10MM)	Finish Options: GOLD, SILVER
Recess: 0.788" (20MM)	
FSPT Fibers: 3 (MAX.)	

Prime Material: PLASTIC
Mounting: SLEEVE INCLUDED

interior



FE-9004 CRYSTAL POINT	
Max. Overall Dimensions: 0.63" OD x 1.94" H (16MM OD x 49.3MM H)	
Trim/Flange Dimensions: 0.63" OD x 0.512" H (16MM OD x 13MM H)	
Aperture Dimensions: 0.306" OD (7.8MM OD)	
Rough-in: 0.394" (10MM)	Finish Options: GOLD, SILVER
Recess: 0.788" (20MM)	
FSPT Fibers: 3 (MAX.)	

Prime Material: PLASTIC
Mounting: SLEEVE INCLUDED

interior



FE9050 MINI BULLET POINT	
Max. Overall Dimensions: 0.5" OD x 1.25" H (12.7MM OD x 31.75H)	
Trim/Flange Dimensions: 0.5" OD x 0.06" H (12.7MM OD x 1.5MM H)	
Aperture Dimensions: 0.322" OD (8.18MM OD)	
Rough-in: 0.35" (8.9MM)	Finish Options: CLEAR
Recess: 4" (101MM)	
FSPT Fibers: 12 (MAX.)	
Ferrules: INCLUDED	

Prime Material: PLASTIC
Mounting: LOCKING NUT INCLUDED

DECORATIVE POINTS AND CRYSTALS

interior_fixed_unlensed



interior



CRE1101 MICRO BULLET	
Max. Overall Dimensions: 0.157" OD x 0.433" H (4MM OD x 11MM H)	
Trim/Flange Dimensions: 0.157" OD x 0.1" H (4MM OD x 2.5MM H)	
Aperture Dimensions: 0.157" OD (4MM OD)	
Rough-in: 0.118" OD (3MM OD)	Finish Options: CLEAR
Recess: 0.315" (8MM)	
FSPT Fibers: 1 (MAX.)	

Prime Material: PLASTIC
Mounting: ADHESIVE

interior



CRE1102 MINI BULLET	
Max. Overall Dimensions: 0.25" OD x 0.768" H (6.4MM OD x 19.5MM H)	
Trim/Flange Dimensions: 0.25" OD x 0.492" H (6.4MM OD x 12.5MM H)	
Aperture Dimensions: 0.197" OD (5MM OD)	
Rough-in: 0.25" OD (6.4MM OD)	Finish Options: CLEAR
Recess: 0.28" (7.1MM)	
FSPT Fibers: 12 (MAX.)	

Prime Material: PLASTIC
Mounting: ADHESIVE

interior



CRE1103 BULLET	
Max. Overall Dimensions: 0.374" OD x 0.964" H (9.5MM OD x 24.5MM H)	
Trim/Flange Dimensions: 0.374" OD x 0.61" H (9.5MM OD x 15.5MM H)	
Aperture Dimensions: 0.315" OD (8MM OD)	
Rough-in: 0.374" OD (9.5MM OD)	Finish Options: CLEAR
Recess: 0.354" (9MM)	
FSPT Fibers: 25 (MAX.)	

Prime Material: PLASTIC
Mounting: ADHESIVE

interior



CRE1104 MAXI BULLET	
Max. Overall Dimensions: 0.866" OD x 1.705" H (22MM OD x 43.3MM H)	
Trim/Flange Dimensions: 0.866" OD x 0.713" H (22MM OD x 18.1MM H)	
Aperture Dimensions: 0.5" OD (12.7MM OD)	
Rough-in: 0.504" OD (12.8MM OD)	Finish Options: CLEAR
Recess: 1" (25.4MM)	
FSPT Fibers: 75 (MAX.)	
Ferrules: 8MM	

Prime Material: PLASTIC
Mounting: ADHESIVE

interior



CRE1105 ICICLE BULLET	
Max. Overall Dimensions: 0.512" OD x 3.5" H (13MM OD x 88.9MM H)	
Trim/Flange Dimensions: 0.512" OD x 3.105" H (13MM OD x 78.9MM H)	
Aperture Dimensions: 0.5" OD (12.7MM OD)	
Rough-in: 0.394" OD (10MM OD)	Finish Options: CLEAR
Recess: 0.394" (10MM)	
FSPT Fibers: 12 (MAX.)	

Prime Material: PLASTIC
Mounting: ADHESIVE

DECORATIVE POINTS AND CRYSTALS

interior_fixed_unlensed

interior



CRE1106 OPAL BALL	
Max. Overall Dimensions: 0.409" OD x 0.409" H (10.4MM OD x 10.4MM H)	
Trim/Flange Dimensions: 0.409" OD x 0.409" H (10.4MM OD x 10.4MM H)	
Aperture Dimensions: 0.409" OD (10.4MM OD)	
Rough-in: 0.409" OD (10.4MM OD)	Finish Options: FROSTED
FSPT Fibers: 12 (MAX.)	

Technical Remarks:
Designed to be adhered to end of fibers with FS-115.

Prime Material: PLASTIC
Mounting: ADHESIVE

interior



CRE1107 5 POINT STAR	
Max. Overall Dimensions: 1.063" OD x 0.354" H (27MM OD x 9MM H)	
Trim/Flange Dimensions: 1.063" OD x 0.118" H (27MM OD x 3MM H)	
Aperture Dimensions: 1.063" OD (27MM OD)	
Rough-in: 0.315" (8MM)	Finish Options: CLEAR
Recess: 0.236" (6MM)	
FSPT Fibers: 12 (MAX.)	

Prime Material: PLASTIC
Mounting: ADHESIVE

interior



CRE1108 MICRO BULLET WITH BEZEL	
Max. Overall Dimensions: 0.394" OD x 1.043" H (10MM OD x 26.5MM H)	
Trim/Flange Dimensions: 0.394" OD x 0.118" H (10MM OD x 3MM H)	
Aperture Dimensions: 0.158" OD (4MM OD)	
Rough-in: 0.307" (7.8MM)	Finish Options: WHITE, BLACK
Recess: 0.925" (23.5MM)	
FSPT Fibers: 1 (MAX.)	

Prime Material: PLASTIC
Mounting: ADHESIVE

interior



CRE1109 MINI BULLET WITH BEZEL	
Max. Overall Dimensions: 0.472" OD x 1.043" H (12MM OD x 26.5MM H)	
Trim/Flange Dimensions: 0.472" OD x 0.118" H (12MM OD x 3MM H)	
Aperture Dimensions: 0.197" OD (5MM OD)	
Rough-in: 0.394" (10MM)	Finish Options: WHITE, BLACK
Recess: 0.925" (23.5MM)	
FSPT Fibers: 12 (MAX.)	

Prime Material: PLASTIC
Mounting: ADHESIVE

interior



CRE1110 BULLET WITH BEZEL	
Max. Overall Dimensions: 0.787" OD x 1.102" H (20MM OD x 28MM H)	
Trim/Flange Dimensions: 0.787" OD x 0.236" H (20MM OD x 6MM H)	
Aperture Dimensions: 0.315" OD (8MM OD)	
Rough-in: 0.689" (17.5MM)	Finish Options: WHITE, BLACK
Recess: 0.866" (22MM)	
FSPT Fibers: 25 (MAX.)	

Prime Material: PLASTIC
Mounting: ADHESIVE

DECORATIVE POINTS AND CRYSTALS

interior_fixed_unlensed



interior



CRE1111 BULLET WITH BEZEL	
Max. Overall Dimensions: 1" OD x 1.588" H (25.4MM OD x 40.3MM H)	
Trim/Flange Dimensions: 1" OD x 0.486" H (25.4MM OD x 12.3MM H)	
Aperture Dimensions: 0.197" OD (5MM OD)	
Rough-in: 0.375" (9.5MM)	Finish Options: WHITE, BLACK
Recess: 1.102" (28MM)	
FSPT Fibers: 12 (MAX.)	

Prime Material: PLASTIC
Mounting: ADHESIVE

interior



CRE1112 MAXI BULLET WITH BEZEL	
Max. Overall Dimensions: 1.417" OD x 1.693" H (36MM OD x 43MM H)	
Trim/Flange Dimensions: 1.417" OD x 0.63" H (36MM OD x 16MM H)	
Aperture Dimensions: 0.5" OD (12.7MM OD)	
Rough-in: 0.866" (22MM)	Finish Options: WHITE, BLACK
Recess: 1.063" (27MM)	
FSPT Fibers: 75 (MAX.)	
Ferrules: 8MM	

Prime Material: PLASTIC
Mounting: ADHESIVE

interior



CRE1113 5 POINT STAR WITH BEZEL	
Max. Overall Dimensions: 1.063" OD x 1.024" H (27MM OD x 26MM H)	
Trim/Flange Dimensions: 0.63" OD x 0.197" H (16MM OD x 5MM H)	
Aperture Dimensions: 1.063" OD (27MM OD)	
Rough-in: 0.504" (12.8MM)	Finish Options: WHITE, BLACK
Recess: 0.827" (21MM)	
FSPT Fibers: 12 (MAX.)	

Prime Material: PLASTIC
Mounting: ADHESIVE

interior



CRE1114 OPAL BALL WITH BEZEL	
Max. Overall Dimensions: 0.63" OD x 0.512" H (16MM OD x 13MM H)	
Trim/Flange Dimensions: 0.63" OD x 0.1" H (16MM OD x 2.5MM H)	
Aperture Dimensions: 0.409" OD (10.4MM OD)	
Rough-in: 0.504" (12.8MM)	Finish Options: WHITE, BLACK
Recess: 0.75" (19MM)	

Prime Material: PLASTIC
Mounting: ADHESIVE

DECORATIVE FIXTURES

exterior_fixed_unlensed

exterior



CRE2601 MICRO MINI BOLLARD	
Max. Overall Dimensions:	4" OD x 3.324" H (102MM OD x 84.4MM H)
Trim/Flange Dimensions:	4" OD x 0.254" H (102MM OD x 6.45MM H)
Aperture Dimensions:	2" OD (50.8MM OD)
Rough-in:	1.378" (35MM)
Recess:	1.25" (31.8MM)
FSPT Fibers:	50 (MAX.)
Ferrules:	8MM
Finish Options:	BLACK, STAINLESS STEEL

Prime Material:	ALUMINUM AND ACRYLIC
Mounting:	SCREWS

exterior



CRE2602 MICRO DECORATIVE FLAT BOLLARD	
Max. Overall Dimensions:	4" OD x 2.521" H (102MM OD x 64.03MM H)
Trim/Flange Dimensions:	4" OD x 0.254" H (102MM OD x 6.45MM H)
Aperture Dimensions:	2" OD (50.8MM OD)
Rough-in:	1.378" (35MM)
Recess:	1.25" (31.8MM)
FSPT Fibers:	50 (MAX.)
Ferrules:	8MM
Finish Options:	BLACK, STAINLESS STEEL

Prime Material:	ALUMINUM AND ACRYLIC
Mounting:	SCREWS

exterior



CRE2603 MICRO LATERAL FLAT BOLLARD	
Max. Overall Dimensions:	4" OD x 2.521" H (102MM OD x 64.03MM H)
Trim/Flange Dimensions:	4" OD x 0.254" H (102MM OD x 6.45MM H)
Aperture Dimensions:	2" OD (50.8MM OD)
Rough-in:	1.378" (35MM)
Recess:	1.25" (31.8MM)
FSPT Fibers:	50 (MAX.)
Ferrules:	8MM
Finish Options:	BLACK, STAINLESS STEEL

Technical Remarks:	Fixture allows lateral light out of sides and top.
Prime Material:	ALUMINUM AND ACRYLIC
Mounting:	SCREWS

exterior



CRE2604 MICRO DOMED FLAT BOLLARD	
Max. Overall Dimensions:	4" OD x 2.134" H (102MM OD x 54.2MM H)
Trim/Flange Dimensions:	4" OD x 0.254" H (102MM OD x 6.45MM H)
Aperture Dimensions:	2" OD (50.8MM OD)
Rough-in:	1.378" (35MM)
Recess:	1.25" (31.8MM)
FSPT Fibers:	50 (MAX.)
Ferrules:	8MM
Finish Options:	BLACK, STAINLESS STEEL

Prime Material:	ALUMINUM AND ACRYLIC
Mounting:	SCREWS

UNDERWATER FIXTURES

exterior_fixed_lensed



underwater



LNS-100 UNDERWATER LENSED FIXTURE	
Max. Overall Dimensions:	3.5" OD x 1.75" H (88.9MM OD x 44.4MM H)
Lens Dimensions:	2.18" OD (55.4MM OD)
Rough-in:	2" (50.8MM)
FSPT Fibers:	100 (MAX.)
Ferrules:	INCLUDED
Finish Options:	BLACK, WHITE

Technical Remarks:	Available for use with 75 fibers maximum (LNS-100G-white finish, LNS-100BLG-black finish, and LNS-100A-white finish with locking nut). A lens tightening tool (FS-117) is required for installation and must be ordered separately. Comes with fresnel lens or optional broadcast lens (B11458).
Prime Material:	PLASTIC
Mounting:	CONDUIT, STUBBING TO 1.5" PVC

underwater



LNS-225 UNDERWATER LENSED FIXTURE	
Max. Overall Dimensions:	3.5" OD x 1.75" H (88.9MM OD x 44.4MM H)
Lens Dimensions:	2.18" OD (55.4MM OD)
Rough-in:	2" (50.8MM)
FSPT Fibers:	225 (MAX.)
Ferrules:	INCLUDED
Finish Options:	BLACK, WHITE

Technical Remarks:	Available for use with 225 fibers (LNS-225G-white finish, and LNS-225A-white finish with locking nut). A lens tightening tool (FS-117) is required for installation and must be ordered separately. Comes with fresnel lens or optional broadcast lens (B11458).
Prime Material:	PLASTIC
Mounting:	CONDUIT, STUBBING TO 1.5" PVC

underwater



LBM06102030S2 UNDERWATER LENSED FIXTURE	
Max. Overall Dimensions:	3.973" OD x 2.362" H (100MM OD x 60MM H)
Trim/Flange Dimensions:	3.973" OD x 0.394" H (100MM OD x 10MM H)
Aperture Dimensions:	2.205" OD (56MM OD)
Rough-in:	2.441" (62MM)
Recess:	1.969" (50MM)
FSPT Fibers:	150 (MAX.)
Ferrules:	8MM, 10MM
Beam Spread:	85 (MIN.) – 85 (MAX.)
Finish Options:	STAINLESS STEEL

Technical Remarks:	Material is V4A stainless steel, resistant to salt water. Comes with LBM06102000 'LNS 100V4A Installation Kit', LBM061020301 'LNS 100V4A Mounting Sleeve', and LBM061020302 'LNS100V4A Pour-In-Ring'.
Prime Material:	STAINLESS STEEL
Mounting:	REFER TO TECHNICAL REMARKS

underwater



CRE2153 LENSED FOUNTAIN SPOTLIGHT	
Max. Overall Dimensions:	1.063" OD x 3.15" H (27MM OD x 80MM H)
Trim/Flange Dimensions:	1.063" OD (27MM OD)
Aperture Dimensions:	1" OD (25.4MM OD)
FSPT Fibers:	75 (MAX.)
Ferrules:	8MM, 10MM
Beam Spread:	17 (MIN.) – 17 (MAX.)
Finish Options:	STAINLESS STEEL

Technical Remarks:	Mount to fountain head with 1" pipe clamp, or secure to any object with appropriate device.
Prime Material:	STAINLESS STEEL
Mounting:	PIPE CLAMP BY OTHERS

underwater



LBM061208202 MINI-FOUNTAIN FITTING	
Max. Overall Dimensions:	1.338" OD x 1.693" H (34MM OD x 43MM H)
Trim/Flange Dimensions:	1.338" OD x 0.079" H (34MM OD x 2MM H)
Aperture Dimensions:	0.75" OD (19MM OD)
Rough-in:	1" (25.4MM)
Recess:	1.496" (38MM)
FSPT Fibers:	75 (MAX.)
Ferrules:	8MM, 10MM
Beam Spread:	15 (MIN.) – 35 (MAX.)
Finish Options:	STAINLESS STEEL

Technical Remarks:	Adhere inside 1-1/4" PVC pipe or directly into wall or floor of pool/pond/fountain with Fiberstars silicon adhesive (FS-136 or FS-138).
Prime Material:	STAINLESS STEEL
Mounting:	REFER TO TECHNICAL REMARKS

DECORATIVE FIXTURES

exterior_fixed_unlensed

exterior



CRE2601 MICRO MINI BOLLARD	
Max. Overall Dimensions:	4" OD x 3.324" H (102MM OD x 84.4MM H)
Trim/Flange Dimensions:	4" OD x 0.254" H (102MM OD x 6.45MM H)
Aperture Dimensions:	2" OD (50.8MM OD)
Rough-in:	1.378" (35MM)
Recess:	1.25" (31.8MM)
FSPT Fibers:	50 (MAX.)
Ferrules:	8MM
Finish Options:	BLACK, STAINLESS STEEL

Prime Material:	ALUMINUM AND ACRYLIC
Mounting:	SCREWS

exterior



CRE2602 MICRO DECORATIVE FLAT BOLLARD	
Max. Overall Dimensions:	4" OD x 2.521" H (102MM OD x 64.03MM H)
Trim/Flange Dimensions:	4" OD x 0.254" H (102MM OD x 6.45MM H)
Aperture Dimensions:	2" OD (50.8MM OD)
Rough-in:	1.378" (35MM)
Recess:	1.25" (31.8MM)
FSPT Fibers:	50 (MAX.)
Ferrules:	8MM
Finish Options:	BLACK, STAINLESS STEEL

Prime Material:	ALUMINUM AND ACRYLIC
Mounting:	SCREWS

exterior



CRE2603 MICRO LATERAL FLAT BOLLARD	
Max. Overall Dimensions:	4" OD x 2.521" H (102MM OD x 64.03MM H)
Trim/Flange Dimensions:	4" OD x 0.254" H (102MM OD x 6.45MM H)
Aperture Dimensions:	2" OD (50.8MM OD)
Rough-in:	1.378" (35MM)
Recess:	1.25" (31.8MM)
FSPT Fibers:	50 (MAX.)
Ferrules:	8MM
Finish Options:	BLACK, STAINLESS STEEL

Technical Remarks:	Fixture allows lateral light out of sides and top.
Prime Material:	ALUMINUM AND ACRYLIC
Mounting:	SCREWS

exterior



CRE2604 MICRO DOMED FLAT BOLLARD	
Max. Overall Dimensions:	4" OD x 2.134" H (102MM OD x 54.2MM H)
Trim/Flange Dimensions:	4" OD x 0.254" H (102MM OD x 6.45MM H)
Aperture Dimensions:	2" OD (50.8MM OD)
Rough-in:	1.378" (35MM)
Recess:	1.25" (31.8MM)
FSPT Fibers:	50 (MAX.)
Ferrules:	8MM
Finish Options:	BLACK, STAINLESS STEEL

Prime Material:	ALUMINUM AND ACRYLIC
Mounting:	SCREWS

UNDERWATER FIXTURES

exterior_fixed_lensed



underwater



LNS-100 UNDERWATER LENSED FIXTURE	
Max. Overall Dimensions:	3.5" OD x 1.75" H (88.9MM OD x 44.4MM H)
Lens Dimensions:	2.18" OD (55.4MM OD)
Rough-in:	2" (50.8MM)
FSPT Fibers:	100 (MAX.)
Ferrules:	INCLUDED
Finish Options:	BLACK, WHITE

Technical Remarks:	Available for use with 75 fibers maximum (LNS-100G-white finish, LNS-100BLG-black finish, and LNS-100A-white finish with locking nut). A lens tightening tool (FS-117) is required for installation and must be ordered separately. Comes with fresnel lens or optional broadcast lens (B11458).
Prime Material:	PLASTIC
Mounting:	CONDUIT, STUBBING TO 1.5" PVC

underwater



LNS-225 UNDERWATER LENSED FIXTURE	
Max. Overall Dimensions:	3.5" OD x 1.75" H (88.9MM OD x 44.4MM H)
Lens Dimensions:	2.18" OD (55.4MM OD)
Rough-in:	2" (50.8MM)
FSPT Fibers:	225 (MAX.)
Ferrules:	INCLUDED
Finish Options:	BLACK, WHITE

Technical Remarks:	Available for use with 225 fibers (LNS-225G-white finish, and LNS-225A-white finish with locking nut). A lens tightening tool (FS-117) is required for installation and must be ordered separately. Comes with fresnel lens or optional broadcast lens (B11458).
Prime Material:	PLASTIC
Mounting:	CONDUIT, STUBBING TO 1.5" PVC

underwater



LBM06102030S2 UNDERWATER LENSED FIXTURE	
Max. Overall Dimensions:	3.973" OD x 2.362" H (100MM OD x 60MM H)
Trim/Flange Dimensions:	3.973" OD x 0.394" H (100MM OD x 10MM H)
Aperture Dimensions:	2.205" OD (56MM OD)
Rough-in:	2.441" (62MM)
Recess:	1.969" (50MM)
FSPT Fibers:	150 (MAX.)
Ferrules:	8MM, 10MM
Beam Spread:	85 (MIN.) – 85 (MAX.)
Finish Options:	STAINLESS STEEL

Technical Remarks:	Material is V4A stainless steel, resistant to salt water. Comes with LBM06102000 'LNS 100V4A Installation Kit', LBM061020301 'LNS 100V4A Mounting Sleeve', and LBM061020302 'LNS100V4A Pour-In-Ring'.
Prime Material:	STAINLESS STEEL
Mounting:	REFER TO TECHNICAL REMARKS

underwater



CRE2153 LENSED FOUNTAIN SPOTLIGHT	
Max. Overall Dimensions:	1.063" OD x 3.15" H (27MM OD x 80MM H)
Trim/Flange Dimensions:	1.063" OD (27MM OD)
Aperture Dimensions:	1" OD (25.4MM OD)
FSPT Fibers:	75 (MAX.)
Ferrules:	8MM, 10MM
Beam Spread:	17 (MIN.) – 17 (MAX.)
Finish Options:	STAINLESS STEEL

Technical Remarks:	Mount to fountain head with 1" pipe clamp, or secure to any object with appropriate device.
Prime Material:	STAINLESS STEEL
Mounting:	PIPE CLAMP BY OTHERS

underwater



LBM061208202 MINI-FOUNTAIN FITTING	
Max. Overall Dimensions:	1.338" OD x 1.693" H (34MM OD x 43MM H)
Trim/Flange Dimensions:	1.338" OD x 0.079" H (34MM OD x 2MM H)
Aperture Dimensions:	0.75" OD (19MM OD)
Rough-in:	1" (25.4MM)
Recess:	1.496" (38MM)
FSPT Fibers:	75 (MAX.)
Ferrules:	8MM, 10MM
Beam Spread:	15 (MIN.) – 35 (MAX.)
Finish Options:	STAINLESS STEEL

Technical Remarks:	Adhere inside 1-1/4" PVC pipe or directly into wall or floor of pool/pond/fountain with Fiberstars silicon adhesive (FS-136 or FS-138).
Prime Material:	STAINLESS STEEL
Mounting:	REFER TO TECHNICAL REMARKS

UNDERWATER FIXTURES

exterior_fixed_lensed

underwater



LBM06120819, LBM06120820 LENSED FOUNTAIN SPOTLIGHT

Max. Overall Dimensions: 1.772" OD x 1.693" H (45MM OD x 30MM H)	
Trim/Flange Dimensions: 1.772" OD x 0.118" H (45MM OD x 3MM H)	
Aperture Dimensions: 0.75" OD (19MM OD)	
Rough-in: 0.866" (22MM)	Beam Spread: 15 (MIN.) – 35 (MAX.)
Recess: 1.063" (27MM)	Finish Options: STAINLESS STEEL - 819
FSPT Fibers: 75 (MAX.)	BRONZE - 820
Ferrules: 8MM, 10MM	

Technical Remarks:
Adhere inside 1" PVC pipe with Fiberstars silicon adhesive (FS-136 or FS-138).

Prime Material:	STAINLESS STEEL
Mounting:	REFER TO TECHNICAL REMARKS

UNDERWATER FIXTURES

exterior_adjustable_lensed



underwater



LBM06102120 RECESSED UNDERWATER ACCENT

Max. Overall Dimensions: 4.75" OD x 5.12" H (121MM OD x 130MM H)	
Trim/Flange Dimensions: 4.75" OD x 1.19" H (121MM OD x 30.2MM H)	
Aperture Dimensions: 0.75" OD (19MM OD)	
Rough-in: 3" (76.2MM)	Beam Spread: 15 (MIN.) – 35 (MAX.)
Recess: 4" (102MM)	Rotation Angle: 360
FSPT Fibers: 75 (MAX.)	Max. Tilt Angle: +/- 30
Ferrules: 8MM, 10MM	Finish Options: STAINLESS STEEL

Technical Remarks:
Adheres inside PVC pipe or directly into wall or floor of pool/pond/fountain with Fiberstars silicon adhesive (FS-136 or FS-138).

Prime Material:	STAINLESS STEEL
------------------------	-----------------

underwater



LBM06102121 YOKE MOUNTED UNDERWATER ACCENT

Max. Overall Dimensions: 2.19" OD x 2.81" H (55.6MM OD x 71.4MM H)	
Aperture Dimensions: 0.792" OD (20.12MM OD)	
FSPT Fibers: 75 (MAX.)	Beam Spread: 15 (MIN.) – 35 (MAX.)
Ferrules: 8MM, 10MM	Rotation Angle: 360
	Max. Tilt Angle: +/- 90
	Finish Options: STAINLESS STEEL

Prime Material:	STAINLESS STEEL
Mounting:	YOKE

PAVER FIXTURES

exterior_fixed_unlensed

exterior



FS-710 SMALL TILE PAVER	
Max. Overall Dimensions: 0.71" OD x 2.25" H (18MM OD x 57.2MM H)	
Trim/Flange Dimensions: 0.47" OD (11.9MM OD)	
Aperture Dimensions: 0.23" OD (5.8MM OD)	
Rough-in: 0.39" (9.9MM)	Finish Options: STAINLESS STEEL
FSPT Fibers: 3 (MAX.)	
Ferrules: INCLUDED	

Technical Remarks:
Threaded, two piece fixture for inserting into tile pavers. Includes shock resistant, frosted glass cover.

Prime Material: STAINLESS STEEL
Mounting: TILE PAVER HARDWARE

exterior



FS-711 LARGE TILE PAVER	
Max. Overall Dimensions: 1.17" OD x 2.53" H (29.7MM OD x 64.3MM H)	
Trim/Flange Dimensions: 0.85" OD (21.6MM OD)	
Aperture Dimensions: 0.47" OD (11.9MM OD)	
Rough-in: 0.78" (19.8MM)	Finish Options: STAINLESS STEEL
FSPT Fibers: 12 (MAX.)	
Ferrules: INCLUDED	

Technical Remarks:
Threaded, two piece fixture for inserting into tile pavers. Includes shock resistant, frosted glass cover. Cover available flat (FS-711-FF) or domed (FS-711-DF).

Prime Material: STAINLESS STEEL
Mounting: TILE PAVER HARDWARE

exterior



FS-712 SMALL POURED-IN PLACE PAVER	
Max. Overall Dimensions: 1" OD x 2.125" H (25.4MM OD x 54MM H)	
Aperture Dimensions: 0.187" OD (4.7MM OD)	
FSPT Fibers: 12 (MAX.)	Finish Options: CLEAR
Ferrules: INCLUDED	

Technical Remarks:
Acrylic tip mounts to end of 0.5" SCH. 40 PVC conduit for use in poured concrete applications. Fixtures are installed prior to concrete applications. Fixtures are installed prior to concrete pouring, with tops of fixtures above finished concrete level. After concrete has cured, fixture tops are cut off flush with concrete.

Prime Material: PLASTIC
Mounting: 0.5" PVC CONDUIT

exterior



FS-713 LARGE POURED-IN PLACE PAVER	
Max. Overall Dimensions: 1" OD x 2.125" H (25.4MM OD x 54MM H)	
Aperture Dimensions: 0.38" OD (9.7MM OD)	
FSPT Fibers: 12 (MAX.)	Finish Options: CLEAR
Ferrules: INCLUDED	

Technical Remarks:
Acrylic tip mounts to end of 0.5" SCH. 40 PVC conduit for use in poured concrete applications. Fixtures are installed prior to concrete applications. Fixtures are installed prior to concrete pouring, with tops of fixtures above finished concrete level. After concrete has cured, fixture tops are cut off flush with concrete.

Prime Material: PLASTIC
Mounting: 0.5" PVC CONDUIT

exterior



CRE1207 MICRO PAVER	
Max. Overall Dimensions: 0.551" OD x 0.926" H (14MM OD x 23.5MM H)	
Trim/Flange Dimensions: 0.551" OD x 0.06" H (14MM OD x 1.5MM H)	
Aperture Dimensions: 0.394" OD (10MM OD)	
Rough-in: 0.512" (13MM)	Finish Options: STAINLESS STEEL
Recess: 0.866" (22MM)	Lens Options: FROSTED, CLEAR
FSPT Fibers: 12 (MAX.)	

Technical Remarks:
6mm frosted glass lens is standard. Polycarbonate lens available by special order. Suitable for walk-over, drive-over applications.

Prime Material: STAINLESS STEEL
Mounting: ADHESIVE

PAVER FIXTURES

exterior_fixed_unlensed



exterior



CRE1208 MINI PAVER	
Max. Overall Dimensions: 1.496" OD x 2.619" H (38MM OD x 66.5MM H)	
Trim/Flange Dimensions: 1.496" OD x 0.06" H (38MM OD x 1.5MM H)	
Aperture Dimensions: 0.669" OD (17MM OD)	
Rough-in: 1.102" (28MM)	Finish Options: STAINLESS STEEL
Recess: 2.559" (65MM)	Lens Options: CLEAR, FROSTED
FSPT Fibers: 75 (MAX.)	
Ferrules: 8MM, 10MM	

Technical Remarks:
6mm frosted glass lens is standard. Polycarbonate lens available by special order. Suitable for walk-over, drive-over, and underwater applications.

Prime Material: STAINLESS STEEL
Mounting: DIRECT BURY

exterior



CRE1209 STANDARD PAVER	
Max. Overall Dimensions: 1.89" OD x 3.21" H (48MM OD x 81.5MM H)	
Trim/Flange Dimensions: 1.89" OD x 0.06" H (48MM OD x 1.5MM H)	
Aperture Dimensions: 1.063" OD (27MM OD)	
Rough-in: 1.575" (40MM)	Finish Options: STAINLESS STEEL
Recess: 3.15" (80MM)	Lens Options: CLEAR, FROSTED
FSPT Fibers: 75 (MAX.)	
Ferrules: 8MM, 10MM	

Technical Remarks:
6mm frosted glass lens is standard. Polycarbonate lens available by special order. Suitable for walk-over, drive-over, and underwater applications.

Prime Material: STAINLESS STEEL
Mounting: DIRECT BURY OR CRE2302 SPRINGS

exterior



CRE1210 DOMED PAVER	
Max. Overall Dimensions: 1.496" OD x 2.638" H (38MM OD x 67MM H)	
Trim/Flange Dimensions: 1.496" OD x 0.472" H (38MM OD x 12MM H)	
Aperture Dimensions: 1.063" OD (27MM OD)	
Rough-in: 1.25" (31.8MM)	Finish Options: STAINLESS STEEL
Recess: 2.165" (55MM)	Lens Options: CLEAR, FROSTED
FSPT Fibers: 75 (MAX.)	
Ferrules: 8MM, 10MM	

Technical Remarks:
6mm frosted glass lens is standard. Polycarbonate lens available by special order. Suitable for walk-over, drive-over, and underwater applications.

Prime Material: STAINLESS STEEL
Mounting: DIRECT BURY

exterior



CRE2320 EYELID PAVER	
Max. Overall Dimensions: 1.89" OD x 3.583" H (48MM OD x 91MM H)	
Trim/Flange Dimensions: 1.89" OD x 0.413" H (48MM OD x 10.5MM H)	
Aperture Dimensions: 1.063" OD (27MM OD)	
Rough-in: 1.693" (43MM)	Finish Options: STAINLESS STEEL
Recess: 3.15" (80MM)	Lens Options: CLEAR, FROSTED
FSPT Fibers: 75 (MAX.)	
Ferrules: 8MM, 10MM	

Technical Remarks:
Cover lens is 6mm hardened, glass lens, clear or frosted. Suitable for walk-over, drive-over, and underwater applications.

Prime Material: STAINLESS STEEL
Mounting: DIRECT BURY OR CRE2302 SPRINGS

exterior



CRE2321 SMALL SCREW-FIX PAVER	
Max. Overall Dimensions: 1.909" OD x 2.559" H (48.5MM OD x 65MM H)	
Trim/Flange Dimensions: 1.909" OD x 0.069" H (48.5MM OD x 1.75MM H)	
Aperture Dimensions: 0.709" OD (18MM OD)	
Rough-in: 1.5" (38.1MM)	Finish Options: STAINLESS STEEL
Recess: 2.559" (65MM)	Lens Options: CLEAR, FROSTED
FSPT Fibers: 75 (MAX.)	
Ferrules: 8MM, 10MM	

Technical Remarks:
Cover lens is 6mm hardened, glass lens, clear or frosted. Suitable for walk-over, drive-over, and underwater applications.

Prime Material: STAINLESS STEEL
Mounting: DIRECT BURY

PAVER FIXTURES

exterior_fixed_unlensed



exterior



CRE2322 LARGE SCREW-FIX PAVER	
Max. Overall Dimensions: 2.362" OD x 2.756" H (60MM OD x 70MM H)	
Trim/Flange Dimensions: 2.362" OD x 0.069" H (60MM OD x 1.75MM H)	
Aperture Dimensions: 0.945" OD (24MM OD)	
Rough-in: 1.535" (39MM)	Finish Options: STAINLESS STEEL
Recess: 2.756" (70MM)	Lens Options: CLEAR, FROSTED
FSPT Fibers: 75 (MAX.)	
Ferrules: 8MM, 10MM	

Technical Remarks:
Cover lens is 6mm hardened, glass lens, clear or frosted. Suitable for walk-over, drive-over, and underwater applications.

Prime Material: STAINLESS STEEL
Mounting: DIRECT BURY OR CRE2302 SPRINGS

exterior



CRE2323 CONE PAVER	
Max. Overall Dimensions: 1.89" OD x 4.567" H (48MM OD x 116MM H)	
Trim/Flange Dimensions: 1.89" OD x 0.069" H (48MM OD x 1.75MM H)	
Aperture Dimensions: 0.945" OD (24MM OD)	
Rough-in: 1.7" (43.2MM)	Finish Options: STAINLESS STEEL, FROSTED CONE
Recess: 3.15" (80MM)	
FSPT Fibers: 75 (MAX.)	
Ferrules: 8MM, 10MM	

Technical Remarks:
Frosted 6mm polycarbonate cone. Suitable for decorative and underwater applications.

Prime Material: STAINLESS STEEL
Mounting: DIRECT BURY OR CRE2302 SPRINGS

exterior



CRE2324 DICHOIC GLASS PAVER	
Max. Overall Dimensions: 1.89" OD x 3.15" H (48MM OD x 80MM H)	
Trim/Flange Dimensions: 1.89" OD x 0.069" H (48MM OD x 1.75MM H)	
Aperture Dimensions: 1.063" OD (27MM OD)	
Rough-in: 1.693" (43MM)	Finish Options: STAINLESS STEEL, FROSTED WITH DICHOIC BACKING
Recess: 3.15" (80MM)	
FSPT Fibers: 75 (MAX.)	
Ferrules: 8MM, 10MM	

Technical Remarks:
Cover lens is a 6mm hardened glass lens, with a frosted dichoric coating. The lens color changes depending on the viewing angle. Suitable for walk-over, drive-over, and underwater applications.

Prime Material: STAINLESS STEEL
Mounting: DIRECT BURY

exterior

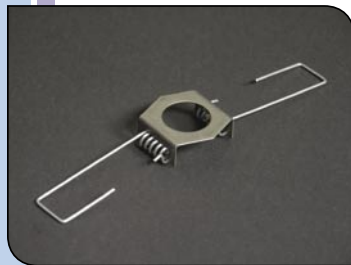


CRE2325 LARGE DOMED PAVER	
Max. Overall Dimensions: 1.969" OD x 2.835" H (50MM OD x 72MM H)	
Trim/Flange Dimensions: 1.969" OD x 0.035" H (50MM OD x 0.89MM H)	
Aperture Dimensions: 0.945" OD (24MM OD)	
Rough-in: 1.772" (45MM)	Finish Options: STAINLESS STEEL, FROSTED
Recess: 2.835" (72MM)	
FSPT Fibers: 75 (MAX.)	
Ferrules: 8MM, 10MM	

Technical Remarks:
Dome is 9.5mm frosted glass. Suitable for walk-over and underwater applications.

Prime Material: STAINLESS STEEL
Mounting: SPRING CLIPS INCLUDED OR REMOVE FOR DIRECT BURY

exterior



CRE2302 SPRING ADAPTOR	
Spring adaptor for CRE1209, CRE2320, CRE2322, CRE2323	

Prime Material: OTHER METAL



Project: Private Residence
Location: Fort Lauderdale, Florida
Designer: Stan Cohen, Florida Architectural Lighting